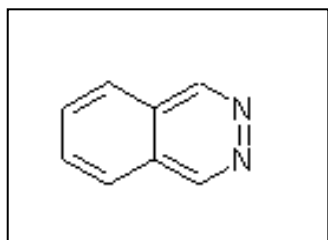


## SPECIFICATIONS

Phthalazine

CAS No. : 253-52-1



### TEST

Description :

Solubility :

Identification by IR :

Water content by KF, % :

Sulphated Ash, % :

pH (10% w/v in DM Water) :

Assay (HPLC), % :

### SPECIFICATIONS

Light tan – light brown crystalline powder, free from visible contamination.

Soluble in Methanol and Chloroform.

The Infrared spectrum of the substance being examined should be concordant with the reference sample spectrum.

Not more than 0.5

Not more than 0.2

Not more than 8.0

Not less than 98.0